

Fourteenth Floor Flat

Please note that the location of doors, windows and other items are approximate and this floorplan is to be used for illustrative purposes only. Unauthorized reproduction is prohibited.

Morton • New

selling and letting properties



Shuttleworth Road
London

Asking Price
£420,000

Absolute Living is delighted to offer the sales market this stunning purpose built 14th floor two double bedroom apartment with a private balcony and fantastic views of London's Skyline & the River Thames. Short walk away from Clapham Junction station and Battersea Square. Perfect for a first time buyer. Chain Free.

The apartment is in good condition throughout and comprise a large carpeted living room, a separate kitchen with modern fitted modern appliances, a west facing balcony with room for a couple of chairs and table, 2 good sized double bedrooms, a modern tiled bathroom with separate WC and plenty of storage throughout. The apartment is beautifully lit with natural light. Residents are able to purchase a parking permit through Wandsworth Council. The annual service charge is £1424 and there is no onward chain.

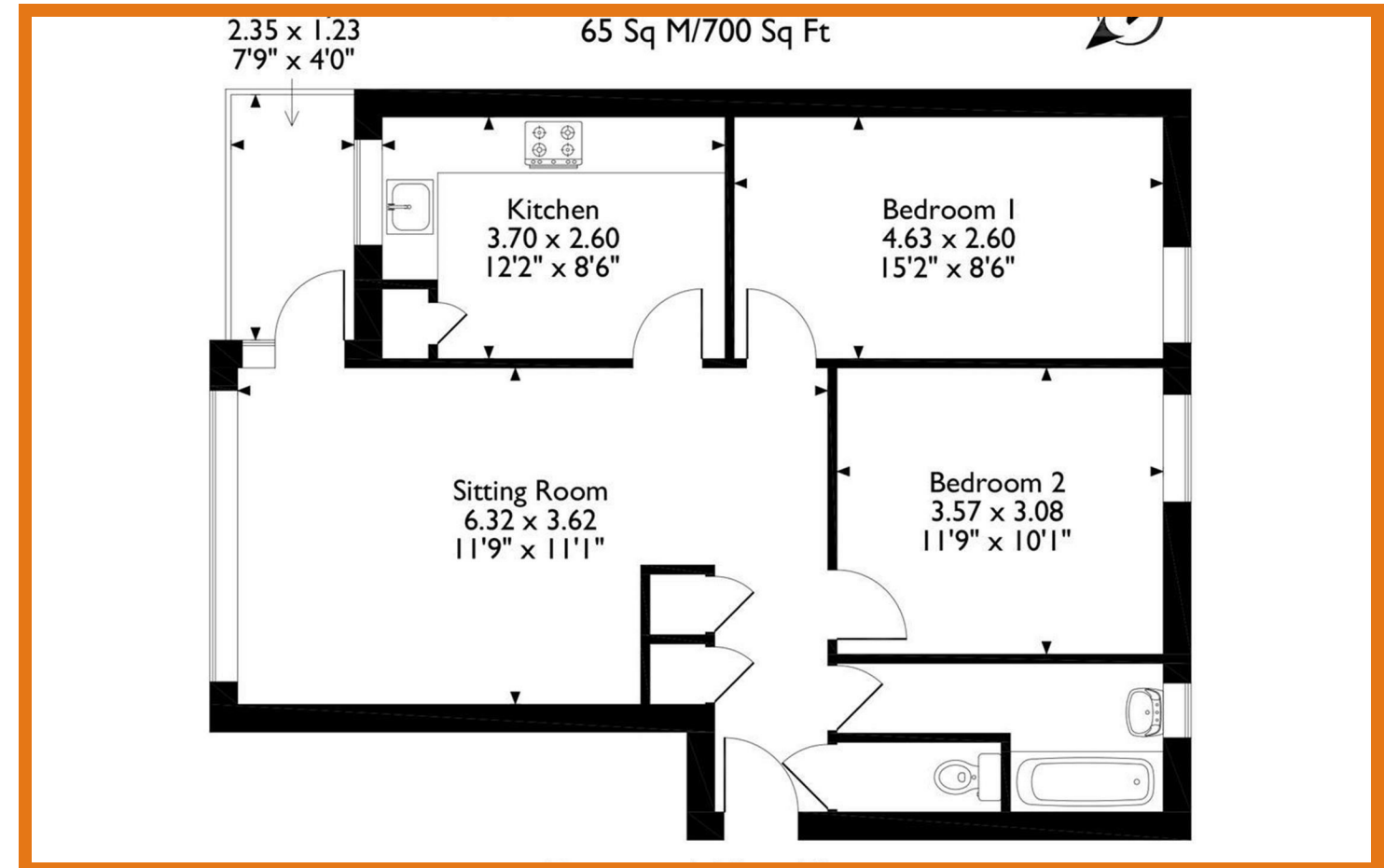
- Council Tax Band: C
- Gaitskell Court, Shuttleworth Road SW11
- 14th Floor
- Two Double Bedroom Apartment
- Spacious Living Room
- Separate Kitchen
- Private Balcony
- Fantastic Views Of London Skyline And River Thames
- Chain Free
- Peppercorn Ground Rent/175 Years Left on the Lease
- Please Call Us On 0207 101 1636 To Arrange A Viewing.

Restways
High Street
Gillingham
Dorset
SP8 4AA

t. 01747 824 547
gillingham@mortonnew.co.uk
www.mortonnew.co.uk

Energy Efficiency Rating		Current	Potential
Very energy efficient - lower running costs			
(92 plus) A			
(81-91) B			
(69-80) C			
(55-68) D			
(39-54) E			
(21-38) F			
(1-20) G			
Not energy efficient - higher running costs			
England & Wales		EU Directive 2002/91/EC	

www.mortonnew.co.uk



DISCLAIMER: These particulars, whilst believed to be accurate are set out as a general outline only for guidance and do not constitute any part of an offer or contract. Intending purchasers should not rely on them as statements or representation of fact, but must satisfy themselves by inspection or otherwise as to their accuracy. We have not carried out a detailed survey nor tested the services, appliances and specific fittings. Room sizes should not be relied upon for carpets and furnishings. The measurements given are approximate. No person in this firm's employment has the authority to make or give any representation or warranty in respect of the property.